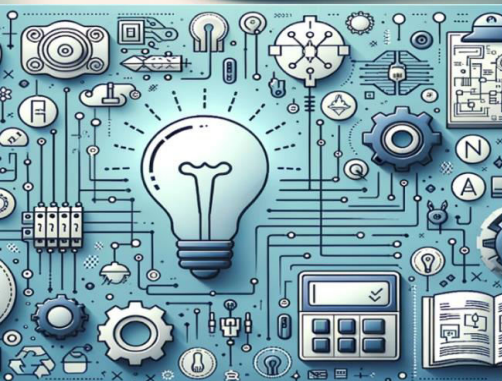


International Journal of Multidisciplinary Research in Science, Engineering and Technology

(A Monthly, Peer Reviewed, Refereed, Scholarly Indexed, Open Access Journal)



Impact Factor: 8.206

Volume 9, Issue 3, March 2026



International Journal of Multidisciplinary Research in Science, Engineering and Technology (IJMRSET)

(A Monthly, Peer Reviewed, Refereed, Scholarly Indexed, Open Access Journal)

Role of Family Support in Promoting Recreational and Sports Activities Among School Students

Navil Kumar N, Dr. Lokendra Singh

Research Scholar, Department of Physical Education, Sunrise University, Alwar, Rajasthan, India

Associate Professor, Department of Physical Education, Sunrise University, Alwar, Rajasthan, India

ABSTRACT: Family support plays a crucial role in shaping children's participation in recreational and sports activities, which are essential for their physical, emotional, and social development. This study explores the influence of family involvement, encouragement, and resources on promoting active lifestyles among school students. In recent years, sedentary behavior and increased screen time have negatively affected students' health, making the role of family support more significant than ever. The research highlights that students whose families actively encourage participation in sports and recreational activities tend to show higher levels of physical fitness, confidence, and teamwork skills. Parental attitudes, including motivation, emotional encouragement, and role modeling, significantly impact a child's interest in engaging in physical activities. Families that prioritize sports by allocating time, providing necessary resources, and attending events contribute positively to sustained student participation. Moreover, the study examines socio-economic factors that influence family support. While financially stable families may provide better access to facilities and training, even low-resource families can foster participation through emotional encouragement and active involvement. The findings also indicate that a supportive home environment helps in reducing stress, improving academic performance, and developing discipline among students.

KEYWORDS: Family Support, Recreational Activities, Sports Participation, School Students.

I. INTRODUCTION

In the contemporary educational landscape, the holistic development of children has become a central concern for educators, policymakers, and parents alike. While academic achievement continues to hold significant importance, increasing attention is being given to the physical, emotional, and social well-being of students. Recreational and sports activities play a vital role in this broader developmental framework, contributing not only to physical fitness but also to the cultivation of essential life skills such as teamwork, discipline, leadership, and resilience. Among the various factors that influence students' participation in such activities, family support emerges as one of the most crucial determinants.

Family, as the primary socializing agent, has a profound impact on a child's attitudes, interests, and behaviors. From early childhood through adolescence, children often look to their parents and family members for guidance, encouragement, and validation. When families actively support and promote engagement in recreational and sports activities, children are more likely to develop a positive attitude toward physical activity and maintain long-term participation. Conversely, a lack of encouragement or awareness within the family environment can act as a barrier, limiting students' involvement and depriving them of the numerous benefits associated with an active lifestyle.

Recreational activities and sports are not merely leisure pursuits; they are integral components of a well-rounded education. Participation in sports enhances physical health by improving cardiovascular fitness, muscular strength, and coordination, while also reducing the risk of obesity and lifestyle-related diseases. Beyond physical benefits, these activities contribute to mental well-being by alleviating stress, anxiety, and depression. They provide opportunities for social interaction, helping students build friendships, develop communication skills, and foster a sense of belonging. In the school context, students who engage in sports often demonstrate improved concentration, better academic performance, and higher levels of self-confidence. Despite these advantages, participation rates in recreational and sports activities among school students can vary significantly due to a range of socio-cultural, economic, and environmental factors. Among these, family support plays a pivotal role in shaping children's opportunities and motivation. Family



International Journal of Multidisciplinary Research in Science, Engineering and Technology (IJMRSET)

(A Monthly, Peer Reviewed, Refereed, Scholarly Indexed, Open Access Journal)

support can manifest in multiple forms, including emotional encouragement, financial assistance, logistical support such as transportation to sports facilities, and active involvement in children's activities. Parents who value physical activity and model active behavior themselves are more likely to instill similar habits in their children.

The influence of family support is particularly significant in the formative years of schooling, when children are developing their identities and preferences. At this stage, positive reinforcement from parents can help children overcome initial hesitations or fears associated with participation in sports. For instance, a child who receives encouragement after a loss in a game is more likely to develop resilience and continue participating, whereas criticism or indifference may discourage further involvement. Moreover, parental attitudes toward gender roles can also impact participation, especially in societies where girls may face restrictions or lack of encouragement to engage in sports.

In addition to direct support, the family environment also shapes children's perceptions of the importance of recreational activities. Families that prioritize academic success at the expense of physical activity may unintentionally discourage participation in sports. While academic achievement is undoubtedly important, an excessive focus on studies without adequate attention to physical and recreational activities can lead to stress, burnout, and reduced overall well-being. Therefore, a balanced approach that integrates both academic and extracurricular pursuits is essential for the healthy development of students. Socio-economic status further influences the extent and nature of family support. Families with higher income levels may have greater access to resources such as sports equipment, coaching, and membership in sports clubs, thereby facilitating children's participation. On the other hand, families from lower socio-economic backgrounds may face financial constraints that limit access to such opportunities. However, it is important to note that emotional support and encouragement, which do not require financial resources, can still significantly motivate children to participate in available recreational activities within their communities or schools.

The role of family support has become even more critical in the modern era, characterized by increasing screen time and sedentary lifestyles among children. The widespread use of digital devices has led to a decline in physical activity, raising concerns about the long-term health implications for young individuals. In this context, families play a key role in setting boundaries for screen usage and promoting active alternatives. By encouraging outdoor play, participation in sports, and involvement in recreational activities, families can help counteract the negative effects of a sedentary lifestyle. Furthermore, collaboration between schools and families can enhance students' participation in sports and recreational activities. Schools can organize awareness programs, workshops, and events that highlight the importance of physical activity, while also engaging parents in the process. When parents and teachers work together, they create a supportive environment that reinforces positive behaviors and encourages consistent participation.

In conclusion, family support is a fundamental factor in promoting recreational and sports activities among school students. It influences not only the level of participation but also the quality of the experience and the long-term adoption of an active lifestyle. By providing encouragement, resources, and a positive environment, families can empower children to engage in physical activities that contribute to their overall development. As the challenges of modern life continue to evolve, the role of family support in fostering healthy, active, and well-rounded individuals becomes increasingly significant.

II. RESEARCH OBJECTIVES

The study titled "Role of Family Support in Promoting Recreational and Sports Activities Among School Students" aims to explore and analyze how the family environment influences students' participation in physical, recreational, and sports-related activities. The objectives are designed to investigate multiple dimensions of family support, including emotional, financial, motivational, and social aspects, and how these contribute to the overall development of school-going children. The specific research objectives of the study are as follows:

The primary objective of this research is to examine the extent to which family support affects the involvement of school students in recreational and sports activities. Participation in such activities is essential for the physical health, mental well-being, and social development of children. However, the role of family encouragement and involvement in shaping these behaviors is often overlooked. Therefore, this study seeks to identify how parental attitudes, values, and practices influence children's interest and regular participation in sports and leisure activities.



International Journal of Multidisciplinary Research in Science, Engineering and Technology (IJMRSET)

(A Monthly, Peer Reviewed, Refereed, Scholarly Indexed, Open Access Journal)

Another key objective is to analyze the different types of family support that contribute to students' engagement in recreational activities. Family support can take various forms, such as providing necessary resources (sports equipment, training fees), offering emotional encouragement, attending competitions, or simply valuing physical activity as an important aspect of life. This objective focuses on distinguishing between these types of support and determining which forms have the most significant impact on students' participation levels.

The study also aims to investigate the relationship between socio-economic status of families and students' participation in sports and recreational activities. Families with higher income levels may have better access to facilities, coaching, and equipment, whereas students from lower socio-economic backgrounds may face limitations. This objective will help to understand whether financial support plays a decisive role or if emotional and motivational support can compensate for economic constraints.

In addition, the study aims to explore the impact of family support on the overall development of students, including physical fitness, mental health, academic performance, and social skills. Participation in recreational activities is known to reduce stress, improve concentration, and foster teamwork and leadership qualities. This objective seeks to establish a connection between family support and these developmental outcomes.

Furthermore, the research seeks to provide recommendations for parents, schools, and policymakers on how to enhance family support for recreational and sports activities. Based on the findings, the study aims to suggest practical strategies that can be implemented to encourage greater participation among students. These recommendations may include awareness programs, parent engagement initiatives, and policies that promote inclusive sports opportunities.

Lastly, the study aims to contribute to the existing body of knowledge on the importance of family influence in child development, particularly in the context of physical and recreational activities. By highlighting the critical role of family support, this research intends to encourage further studies and promote a holistic approach to student development.

III. METHODOLOGY

This study adopts a systematic and structured approach to investigate the role of family support in promoting recreational and sports activities among school students. The methodology is designed to ensure reliability, validity, and comprehensive analysis of the relationship between family involvement and students' participation in physical and recreational activities.

Research Design

The study employs a descriptive survey research design, which is appropriate for examining existing conditions, behaviors, and attitudes without manipulating variables. This design helps in understanding how family support influences students' participation in recreational and sports activities in their natural environment. Both quantitative and qualitative elements are incorporated to provide a holistic understanding of the issue.

Population and Sample

The target population of the study consists of school students aged 10 to 18 years, studying in primary, middle, and secondary schools. Additionally, parents or guardians of these students are also included to gather insights into family support mechanisms.

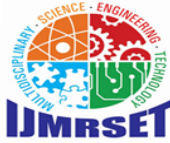
A sample size of 200 students is selected using a stratified random sampling technique to ensure representation across different age groups, genders, and socio-economic backgrounds. Alongside, 100 parents are selected to participate in the study. Schools from both urban and rural areas are included to capture diverse perspectives and environmental influences.

Sampling Technique

Stratified random sampling is used to divide the population into different strata such as:

- Age groups (10–13, 14–16, 17–18)
- Gender (male and female students)
- Type of school (government and private)

From each stratum, participants are randomly selected to maintain proportional representation. This method reduces sampling bias and ensures inclusivity.



International Journal of Multidisciplinary Research in Science, Engineering and Technology (IJMRSET)

(A Monthly, Peer Reviewed, Refereed, Scholarly Indexed, Open Access Journal)

Limitations of the Study

Despite careful planning, the study has certain limitations:

- The sample size is limited to selected schools, which may affect generalization.
- Responses may be influenced by social desirability bias.
- Time constraints may limit in-depth analysis.
- The study focuses mainly on school-going students and may not include dropouts.

IV. BACKGROUND

Recreational and sports activities play a vital role in the holistic development of school students. In recent decades, growing concerns about sedentary lifestyles, increased screen time, and declining participation in physical activities among children have drawn the attention of educators, policymakers, and researchers worldwide. Physical inactivity among school-aged children is now considered a major public health issue, as it is associated with rising rates of obesity, mental health challenges, and poor academic outcomes. In this context, understanding the factors that encourage or hinder children's participation in recreational and sports activities has become increasingly important, with family support emerging as a key determinant.

Physical activity is widely recognized as essential for children's physical, mental, and social development. Regular engagement in sports and recreational activities contributes to improved cardiovascular health, better body composition, enhanced motor skills, and stronger bones. Moreover, it positively influences mental health by reducing anxiety, stress, and depression while improving self-esteem and emotional well-being. Studies also indicate that physically active children tend to perform better academically, demonstrating improved concentration, memory, and classroom behavior. Despite these benefits, a significant proportion of children fail to meet recommended levels of physical activity, highlighting the need for supportive environments that encourage active lifestyles. Among the various environmental and social factors, the family is the primary and most influential context in a child's life. Family members, especially parents, play a crucial role in shaping children's attitudes, habits, and behaviors, including their participation in physical activities. From early childhood, parents act as role models, and their own involvement in sports and recreational activities often influences their children's behavior. Research has shown a positive association between parents' and children's physical activity levels, suggesting that children are more likely to be active when their parents engage in or value physical activity. This modeling effect highlights the importance of parental behavior in establishing lifelong healthy habits.

Family support for recreational and sports activities can take various forms, including emotional encouragement, financial assistance, logistical support, and active participation. Emotional support, such as praise and motivation, helps build children's confidence and interest in sports. Financial support enables access to sports equipment, coaching, and participation in organized activities. Logistical support, such as providing transportation and time for practice, ensures that children can regularly engage in sports. Additionally, when parents actively participate in recreational activities with their children, it strengthens family bonds while promoting a culture of physical activity within the household. The importance of family involvement is further emphasized in family-based intervention studies, which have demonstrated that engaging families can significantly improve children's participation in physical activity. Such interventions often include goal-setting, monitoring, and reinforcement strategies that involve both parents and children, leading to better adherence and long-term behavior change. These findings suggest that strategies aimed at increasing children's physical activity are more effective when they target not only the individual child but also the family environment.

In addition to parental influence, the broader family environment, including siblings and extended family members, also contributes to children's engagement in sports and recreational activities. A supportive family environment that prioritizes health and physical activity creates opportunities for children to develop positive attitudes toward exercise. Conversely, lack of support, busy family schedules, financial constraints, and limited awareness can act as barriers, reducing children's participation in such activities.

Thus, this study seeks to examine how different dimensions of family support contribute to the promotion of recreational and sports activities among school students, and how strengthening family involvement can lead to healthier and more active lifestyles among the younger generation.



International Journal of Multidisciplinary Research in Science, Engineering and Technology (IJMRSET)

(A Monthly, Peer Reviewed, Refereed, Scholarly Indexed, Open Access Journal)

V. LITERATURE REVIEW

The role of family support in shaping children's participation in recreational and sports activities has been widely explored in educational, psychological, and sociological research. Family is considered the primary socializing agent, influencing children's attitudes, behaviors, and lifestyle choices from an early age. In the context of sports and recreational engagement, parental encouragement, emotional backing, and resource provision significantly determine students' level of participation and long-term involvement. A substantial body of literature highlights that family support operates through both tangible and intangible mechanisms. Tangible support includes financial assistance, provision of sports equipment, transportation to sports venues, and enrollment in sports programs. Intangible support, on the other hand, involves emotional encouragement, motivation, praise, and active involvement in children's activities. According to research, when both forms of support are present, students are more likely to develop a positive attitude toward sports and maintain consistent participation. Studies examining school-based sports participation reveal a strong association between family support and students' engagement levels. For instance, participation in school sports has been linked with higher academic performance, improved social functioning, and increased perceptions of support from family and community. Students who perceive strong family backing tend to feel more confident, secure, and motivated to participate in extracurricular activities, including sports. This indicates that family encouragement not only promotes physical activity but also contributes to holistic development.

Parental involvement is another crucial factor emphasized in the literature. Research on parental involvement demonstrates that parents' attitudes toward sports, their own participation in physical activities, and their expectations significantly influence children's interest and involvement in sports. A study analyzing parental motivation and financial support found that students whose parents actively encouraged and invested in their sports participation were more likely to engage regularly in sports activities. This suggests that parental beliefs and behaviors act as role models, shaping children's preferences and habits. Socio-economic status (SES) also plays a mediating role in the relationship between family support and sports participation. Families with higher SES are generally able to provide better access to sports facilities, coaching, and equipment. However, research indicates that family support can mitigate some of the disadvantages associated with lower SES. For example, emotional encouragement and prioritization of physical activity within the family can enhance participation even when resources are limited. A study on adolescent girls found that family support and accessibility to facilities significantly influenced sports club membership, highlighting the interconnected nature of economic and social factors.

The structure and dynamics of the family further influence children's sports participation. Research on family structure suggests that children from supportive and stable family environments are more likely to engage in organized sports. Family cohesion, parental involvement, and shared family values regarding health and physical activity contribute to sustained participation. Conversely, lack of parental supervision or support can lead to reduced engagement in recreational activities. Gender differences in sports participation have also been widely discussed in relation to family support. Studies indicate that girls often receive less encouragement and fewer opportunities for sports participation compared to boys, particularly in certain cultural contexts. However, when families actively support and encourage girls, the gender gap in participation significantly decreases. Research focusing on female participation emphasizes that both family and peer support are critical determinants in overcoming social and cultural barriers.

VI. DISCUSSION

The present study on the Role of Family Support in Promoting Recreational and Sports Activities Among School Students highlights the crucial influence of the family environment in shaping children's participation in physical and recreational pursuits. The findings suggest that family support operates as a foundational factor that not only initiates but also sustains students' engagement in sports and leisure activities. This discussion elaborates on the key dimensions of family involvement, its psychological and social implications, and its broader impact on students' holistic development.

One of the most significant observations is that parental encouragement acts as a primary motivator for children to participate in sports. Students who reported receiving consistent encouragement from parents were more likely to engage in regular physical activity compared to those who lacked such support. This aligns with motivational theories which emphasize the role of external reinforcement in building intrinsic interest. When parents express enthusiasm, attend sports events, or celebrate achievements, children tend to develop a positive attitude toward sports, viewing them not merely as extracurricular tasks but as enjoyable and rewarding experiences.



International Journal of Multidisciplinary Research in Science, Engineering and Technology (IJMRSET)

(A Monthly, Peer Reviewed, Refereed, Scholarly Indexed, Open Access Journal)

In addition to emotional encouragement, logistical and financial support also plays a critical role. Participation in organized sports often requires resources such as equipment, training fees, transportation, and time investment. Families that are able to provide these resources create an enabling environment that facilitates consistent involvement. The study reveals that students from supportive families are more likely to have access to structured sports programs, coaching, and better facilities. Conversely, a lack of such support may lead to irregular participation or complete withdrawal from recreational activities, even when interest exists.

Another important dimension is the modeling behavior of parents. Children tend to imitate the habits and lifestyles of their family members. When parents themselves engage in physical activities or prioritize fitness, children are more likely to adopt similar behaviors. This observational learning reinforces the idea that family lifestyle patterns significantly influence children's recreational choices. In contrast, sedentary family environments may discourage active participation, thereby contributing to lower levels of physical activity among students.

VII. CONCLUSION

The present study on the Role of Family Support in Promoting Recreational and Sports Activities Among School Students highlights the crucial influence that family environments exert on children's physical, emotional, and social development. In an era increasingly dominated by academic pressure, digital engagement, and sedentary lifestyles, the importance of recreational and sports participation has become more significant than ever. This research clearly establishes that family support serves as a foundational pillar in shaping students' attitudes, participation levels, and sustained interest in such activities. One of the key findings of this study is that students who receive consistent encouragement, motivation, and involvement from their families are more likely to actively participate in sports and recreational activities. Family members, particularly parents, act as primary role models. When they demonstrate positive attitudes toward physical activity, children tend to adopt similar behaviors. For instance, parents who engage in regular exercise, attend their children's sports events, or encourage outdoor play indirectly reinforce the importance of an active lifestyle. This not only boosts participation but also nurtures discipline, teamwork, and perseverance among students.

The study also reveals that emotional support from family significantly contributes to students' confidence and self-esteem. When parents appreciate their children's efforts rather than focusing solely on outcomes, students develop a healthy mindset toward competition and performance. Such support reduces anxiety and fear of failure, encouraging children to explore and enjoy sports without undue pressure. In contrast, lack of encouragement or overly critical attitudes from family members can discourage participation and lead to withdrawal from physical activities. Another important aspect highlighted is the role of financial and logistical support. Participation in organized sports often requires access to equipment, training facilities, and transportation. Families that are able and willing to provide these resources create opportunities for their children to engage more deeply in sports. However, the study also acknowledges that even in resource-constrained settings, non-material support such as motivation, time, and involvement can significantly influence participation levels. This suggests that while economic factors play a role, emotional and motivational support remains equally, if not more, important.

REFERENCES

1. Howie, E. K., Daniels, B. T., & Guagliano, J. M. (2018). *Promoting physical activity through youth sports programs: It's social*. Health Promotion Practice.
2. Hayoz, C., Klostermann, C., Schmid, J., Schlesinger, T., & Nagel, S. (2017/2019). *Intergenerational transfer of a sports-related lifestyle within the family*. International Review for the Sociology of Sport.
3. McMillan, R., McIsaac, M., & Janssen, I. (2016). *Family structure as a correlate of organized sport participation among youth*. PLOS ONE.
4. Eime, R. M., Harvey, J. T., Craike, M. J., Symons, C. M., & Payne, W. R. (2013). *Family support and sports club membership in adolescent girls*. International Journal of Behavioral Nutrition and Physical Activity.
5. Strandbu, Å., Bakken, A., & Stefansen, K. (2019). *The continued importance of family sport culture*. Sport, Education and Society.
6. Kubayi, N. A., Jooste, J., Toriola, A. L., & Paul, Y. (2014). *Familial and peer influences on sport participation among adolescents*. Mediterranean Journal of Social Sciences.
7. Beets, M. W., Cardinal, B. J., & Alderman, B. L. (2010). *Parental social support and youth physical activity*. American Journal of Health Behavior.



International Journal of Multidisciplinary Research in Science, Engineering and Technology (IJMRSET)

(A Monthly, Peer Reviewed, Refereed, Scholarly Indexed, Open Access Journal)

8. Sallis, J. F., Prochaska, J. J., & Taylor, W. C. (2000). *A review of correlates of physical activity of children and adolescents*. *Medicine & Science in Sports & Exercise*.
9. Trost, S. G., Sallis, J. F., Pate, R. R., et al. (2003). *Evaluating a model of parental influence on youth physical activity*. *American Journal of Preventive Medicine*.
10. Eccles, J. S., & Harold, R. D. (1991). *Gender differences in sport involvement: Applying expectancy-value model*.
11. Fredricks, J. A., & Eccles, J. S. (2005). *Family socialization, gender, and sport motivation*. *Journal of Sport & Exercise Psychology*.
12. Brustad, R. J. (1993). *Who will go out and play? Parental and psychological influences on children's attraction to physical activity*.
13. Bois, J. E., Sarrazin, P. G., Brustad, R. J., Trouilloud, D. O., & Cury, F. (2005). *Parents' appraisals, reflected appraisals, and youth sport motivation*.
14. Davison, K. K., Cutting, T. M., & Birch, L. L. (2003). *Parents' activity-related parenting practices predict girls' physical activity*.
15. Gustafson, S. L., & Rhodes, R. E. (2006). *Parental correlates of physical activity in children and early adolescents*.
16. Edwardson, C. L., & Gorely, T. (2010). *Parental influences on different types of physical activity in youth*.
17. Duncan, S. C., Duncan, T. E., & Strycker, L. A. (2005). *Sources and types of social support in youth physical activity*.
18. Bauer, K. W., Nelson, M. C., Boutelle, K. N., & Neumark-Sztainer, D. (2008). *Parental influences on adolescents' physical activity*.
19. Wheeler, S. (2011). *The significance of family culture for sports participation*.
20. Holt, N. L., Kingsley, B. C., Tink, L. N., & Scherer, J. (2011). *Benefits and challenges associated with sport participation*.



INTERNATIONAL
STANDARD
SERIAL
NUMBER
INDIA



INTERNATIONAL JOURNAL OF MULTIDISCIPLINARY RESEARCH IN SCIENCE, ENGINEERING AND TECHNOLOGY

| Mobile No: +91-6381907438 | Whatsapp: +91-6381907438 | ijmrset@gmail.com |

www.ijmrset.com